

Catch up on the latest DCRI Site Community news.

DCRI SITE COMMUNITY

Collaborating to Improve Care

 Duke Clinical Research Institute

February 2017

We hope you enjoy these brief updates. This month we are excited to share:

- New Study Recruiting Sites
- FYI Clinical Education Series - archive now available
- ICYMI: ADAPTABLE Live on Facebook
- Recent Research Conferences

Visit the [DCRI Community website](#) at any time to see upcoming training opportunities, publications and news, studies seeking sites, and more!

Visit our website

Study Recruiting Sites

See More Studies
Recruiting Sites

HEART-FID: A Randomized, Double-Blind, Placebo-Controlled Study to Investigate the Efficacy and Safety of Injectafer® (Ferric Carboxymaltose) as Therapy for Patients with Heart Failure and Iron Deficiency

A randomized placebo-controlled study assessing the effects of a U.S. market approved intravenous iron compound on rates of death, hospitalizations for worsening heart failure, and changes in 6-minute walk tests for patients in heart failure with iron deficiency.

ClinicalTrials.gov identifier: NCT03037931

Sponsor: Luitpold Pharmaceuticals, Inc.

Recruiting: Sites

Contact for Information:

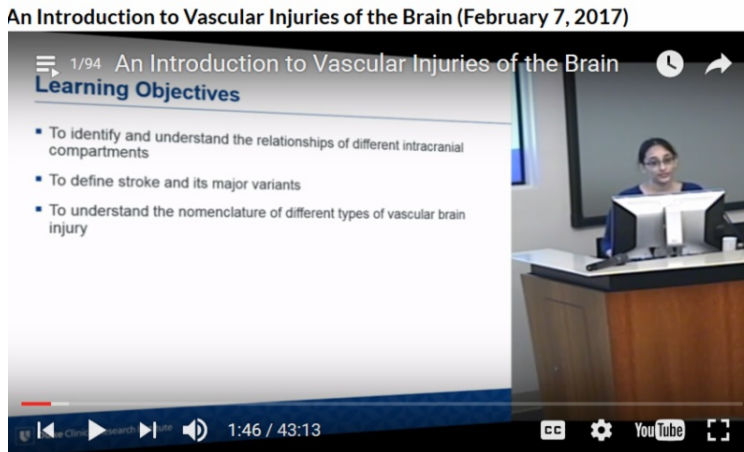
Sharon Califf

sharon.califf@duke.edu

(919) 668-8425

FYI Clinical Education Series—Now Available

Visit the Website



Video archives of these informative presentations are now available!

Learn more about the diseases we are researching. This series of 1-hour presentations by DCRI fellows provides foundational clinical information on a wide range of topics. Recent presentations include:

- An Introduction to Vascular Injuries of the Brain
- Fever in Pediatric Patients
- The Fundamentals of Cardiac Anatomy and Physiology

[View the Presentations](#)

ADAPTABLE
Live on Facebook

[View on Facebook](#)

In case you missed it (ICYMI), on February 13 the ADAPTABLE Study went Live on Facebook, celebrating Heart Month with a discussion panel of physicians and a patient participant. Visit Facebook to view the discussion and visit the website to learn more about ADAPTABLE.



[Learn More About ADAPTABLE](#)

Recent Research

[View DCRI Research
Conference Archive](#)

Conferences

February 21, 2017: Robert Califf, MD [Lessons from FDA Pertinent to DCRI](#)

February 14, 2017: Brenda Hemmelgarn, MD, PhD [Enhancing patient care in the community using health information technology](#)

February 7, 2017: Raphael Valdivia, PhD [The Basic Science Culture at Duke – strengthening ties to the clinical at translational world.](#)

Join our weekly Research Conference most Tuesdays from noon -1:00 pm Eastern time. Watch live on our [YouTube channel](#) or learn more at <https://dcri.org/education-training/dcri-research-conference>.



Duke Clinical Research Institute | 300 West Morgan Street, Suite 800, Durham, NC 27701

[Unsubscribe](#)

[Update Profile](#) | [About our service provider](#)

Sent by dcricommunity@dm.duke.edu